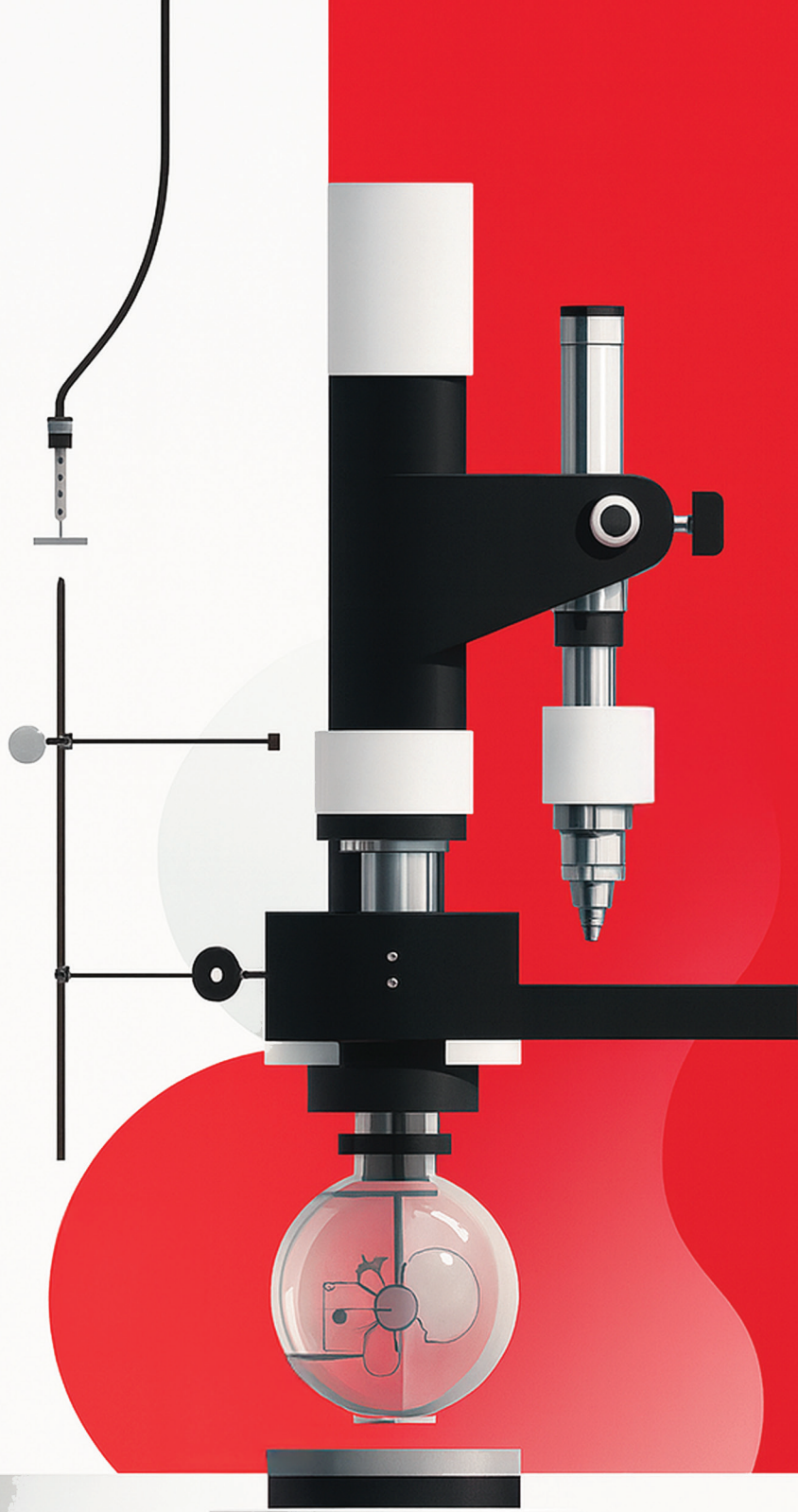




Analytical



Precision in
Every Analysis
**Excellence in
Every Result**

Re Analytical
A Re Sustainability Company

WHO ARE WE?

Re Analytical, the premier analytical services wing of **Re Sustainability**, draws upon the legacy and expertise of Re Sustainability's three decades of industry leadership. As Asia's largest provider of environmental and sustainability solutions, we bring unparalleled experience and commitment to excellence, reliability, and consistency in our services. Our comprehensive environmental and analytical solutions encompass sampling, monitoring, and testing for critical domains such as water, air, soil, solid and hazardous waste, residue, and trace analysis.

At Re Analytical, we lead the industry with a dedication to excellence in analytical testing and environmental monitoring. We proudly offer India's largest network of NABL and MoEF accredited laboratories, ensuring adherence to rigorous national and international standards. Our state-of-the-art lab infrastructure sets benchmarks for precision and accuracy, equipped with advanced technology to consistently deliver superior results



30+ Years of Excellence



11 Million TPA Waste Handled



25,000 Strong Workforce



100+ Operating Facilities



12 Countries
50 Cities | 20 States



50,000+ Clients



OUR USP's



Deep domain experience backed by advanced technologies

We blend decades of market knowledge with predictive analytics to surface hidden value, sharpen risk assessment, and support informed investment decisions.



Comprehensive, integrated capabilities across segments

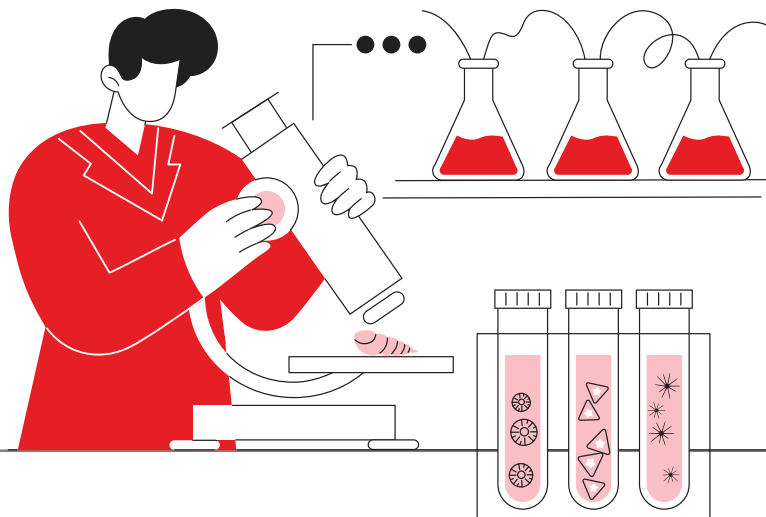
We consolidate analytics across Commercial, Residential, and Alternative sectors into a single platform, eliminating data fragmentation and enabling smarter cross-portfolio decisions.



Sustainability deeply rooted in the company's vision and operations

We incorporate ESG intelligence into core financial analysis, giving investors a measurable view of asset footprint, transition risk, and value upside. This allows clients to benchmark sustainability performance, unlock cost efficiencies, and strengthen long-term investment resilience.

WHY CHOOSE US ?



We have India's largest network of 22 NABL and MoEF accredited labs



Our cutting-edge lab infrastructure sets industry benchmarks for precision and accuracy



We offer complete track and trace system



We offer high serviceability with dedicated Key Account Managers (KAMs)



We provide immediate field support (Team deputation at site < 72 hours)

OUR NETWORK



Hub and Spoke model for low TAT and better Quality

Immediate field support
(Team deputation at site < 72 hours)



Spoke Laboratories

- Sample preservation
- Sample preparation
- Testing
- Ambient air
- Noise
- Stack emission
- Water/waste water
- Soil sludge and sediments
- Industrial/solid waste
- Review and report

16 (Pan India)

Hub Centres

- Spoke capabilities
- Add on sampling and testing capabilities
- Critical inorganics
- Trace metals
- VOC
- SVOC
- Trace analysis
- Industrial gas

4 (Haldia, Panjab, Indore, Chennai)

Centres of Excellence

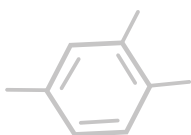
- Hub capabilities +
- State of art testing facilities to perform modern tests on air, water, soil and, waste materials
- Petroleum Hydrocarbons
- Pesticides & residue analysis
- Persistent Organic Pollutants (POPs)

2 (Hyderabad, Mumbai)

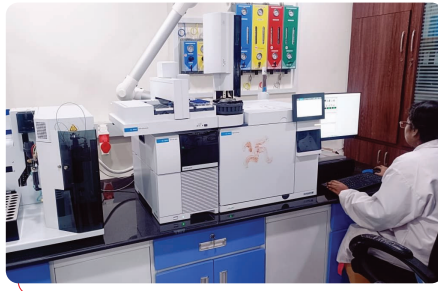
OUR OFFERINGS



Domain	Area of Services	Scope of service
Air Quality	Ambient Air Quality Monitoring (AAQM)	All 12 Parameters as per NAAQS 2009 notification, Mercaptans, VOCs
	Indoor Air Quality	Temperature, Humidity, CO2, Airborne particulate, Formaldehyde, VOCs, Ozone, Illumination, NH3, H2S, Microbial Test
	Weather Monitoring	Wind Speed/Direction, Temp, Humidity, Rainfall, Solar Radiation, Dust Fall
	Industrial Hygiene Study	Personal Exposure, Noise, Heat, Vibration, Ventilation etc.
	Work zone / Fugitive Emission	PM10, PM2.5, SO2, NO2, Silica, Welding/Acid fumes, VOCs etc.
	Noise	Ambient Noise, Source Noise, Area Noise, Personnel Noise, Noise Mapping
Water Quality	Drinking, Surface, Ground, Wastewater and others (Field sampling & laboratory analysis)	Organoleptic/Physical, General Chemical, Toxic Residue, Pesticides, Microbiological, Radioactive
Emissions	Stack (DG, Boiler, Kiln, Incinerator, Process etc) Emission Monitoring	Temp, Flow, Moisture, PM, SO2, NOx, THC, NMHC, O2, CO2, CO, HCl, HF, NH3, Metals, Acid mist, VOCs, PAH, Dioxin & Furans etc.
	Continuous Emission Monitoring Systems (CEMS)	PM CEMS Calibration as per CPCB guideline & Gaseous CEMS Audit (QAL2, QAL3, AST, RATA)
Industrial Process Verification	Performance and Baseline data collection related to Process tuning & retrofitting of Boiler, APH etc.	Measurement of Velocity/Flow, Temp, Pressure, Moisture, Gas density, Particulate & Gaseous concentration
	Performance Study of Pollution Control Devices (ESPs, bag filters, FGD, FTP, cyclone, SNCR, SCR, scrubber, hybrid filter system)	
	Leak Detection & Repair Study (LDAR))	To comply as per Method 21 requirements
	Industrial Gas Testing Services (Compressed Air, Nitrogen, Breathing Air, Medical Oxygen etc)	To meet the requirements as per various standards like ISO 8573, EP and USP
	Atmospheric Corrosivity Monitoring	To comply with ANS/ISA, ASHRAE, ISO Standards
Waste, Dust & Sludge	Hazardous, Non-Hazardous, Recyclable	Physical characteristics, Organic content, Nutrient levels, and Hazardous Components (TCLP Toxicity Test, Schedule II Parameters), Biochemical Methane Potentials (BMP) etc.
	Used Oil & Waste Oil	As per Schedule 5 & 6
Solid Fuels	Coal, AFR/RDF, Fly ash / Bottom ash	Physical Properties, Ultimate, Proximate, Metals, Major/Minor oxides, Calorific Value, Chloride, Cyanide etc.
Soil, Sediments and compost	Brownfield Soil	VOCs, SVOCs, TPH, Metals etc.
	General Soil (Industry/agricultural), Sediments & Compost	Physical, General Chemical, Toxic Residue, Pesticides, Macro-nutrients, Micro-nutrients, Microbiological



WORLD-CLASS EQUIPMENTS



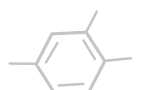
OUR ACCREDITATIONS



Ministry of Environment,
Forest and Climate Change
Government of India



CERTIFICATIONS



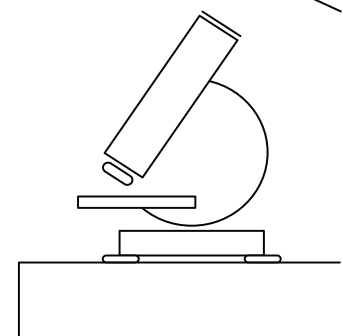
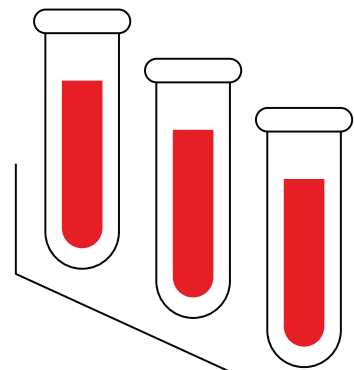
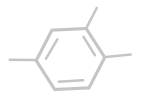
OUR MAJOR CLIENTS



adani



Cipla



**DATA YOU CAN TRUST.
COMPLIANCE YOU CAN RELY ON.**



Level 11B, Aurobindo Galaxy, Hyderabad
Knowledge City, Hitech City Road, Hyderabad
500081. India.



Scan Here To Know More

T : +91-9000387931 | +91-7416668358
E : contact@reanalytical.com
W: reanalytical.com